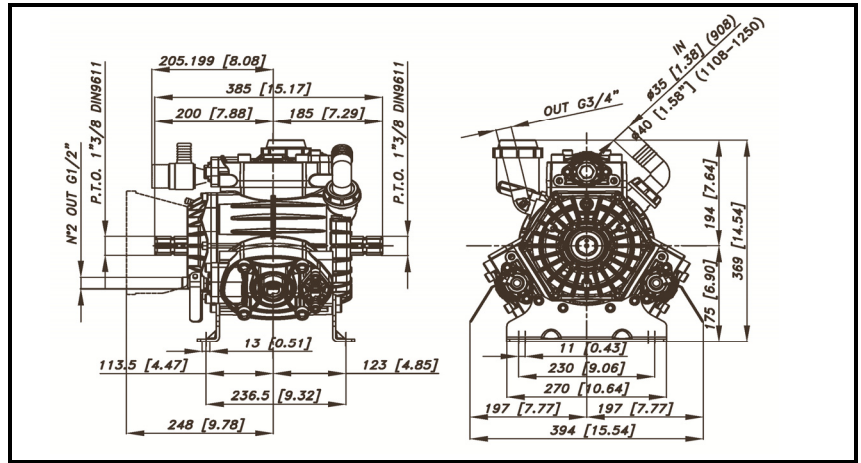
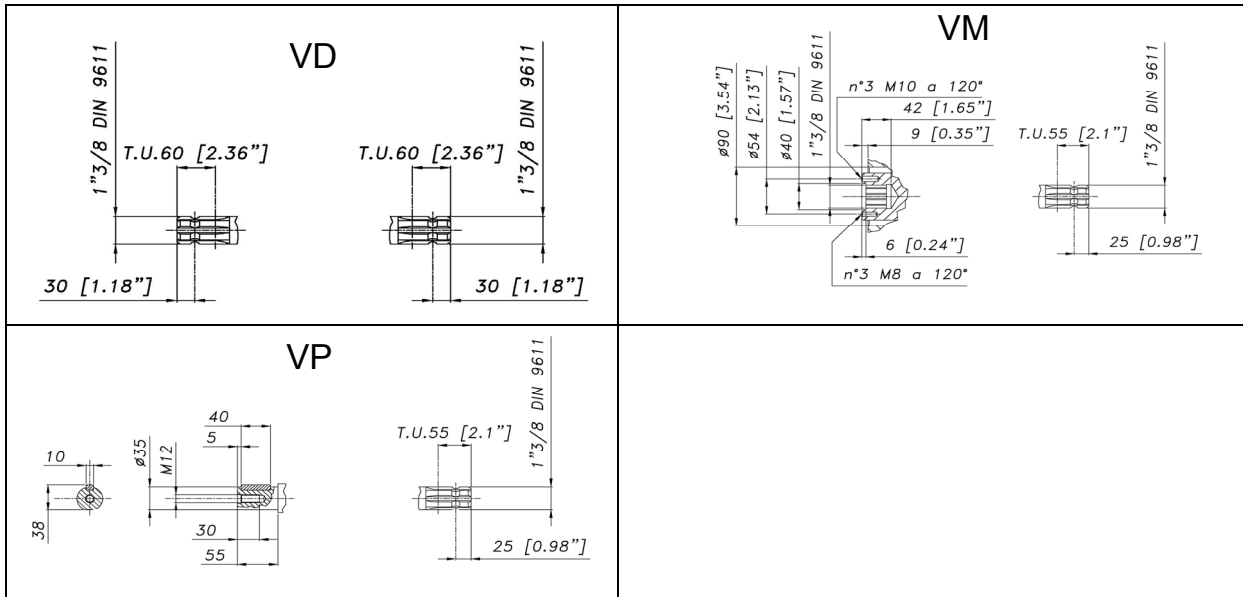


DIMENSIONI D'INGOMBRO - OVERALL DIMENSIONS



ALBERO POMPA - PUMP SHAFT



**COPPIA DI SERRAGGIO - TORQUE CHART**

| CODICE - CODE | Q.TY | POS | N.m | Lbr.ft |
|---------------|------|-----|-----|--------|
| 86.3265.00.2  | 6    | 13  | 44  | 32.5   |
| 86.2682.00.2  | 6    | 31  | 22  | 16.2   |
| 86.2852.00.2  | 2    | 56  | 22  | 16.2   |
| 41.9835.97.3  | 3    | 40  | 25  | 18.5   |
| 86.2752.00.2  | 18   | 6   | 22  | 16.2   |
| 86.3347.00.2  | 2    | 20  | 44  | 32.5   |
| 86.3300.00.2  | 12   | 41  | 44  | 32.5   |
| 86.4250.00.2  | 12   | 47  | 98  | 72.2   |

Tolleranza di serraggio: 0/-10%  
Tolerance on torque value:

**INFORMAZIONI UTILI - USEFUL INFORMATION**

**LUBRIFICANTE- LUBRICANT:**  
OLIO MOTORE O SEMIIDRAULICO SAE 30  
MOTOR OIL OR SEMI-HYDRAULIC OIL SAE 30

**PRESSIONE ACCUMULATORE - ACCUMULATOR PRESSURE**

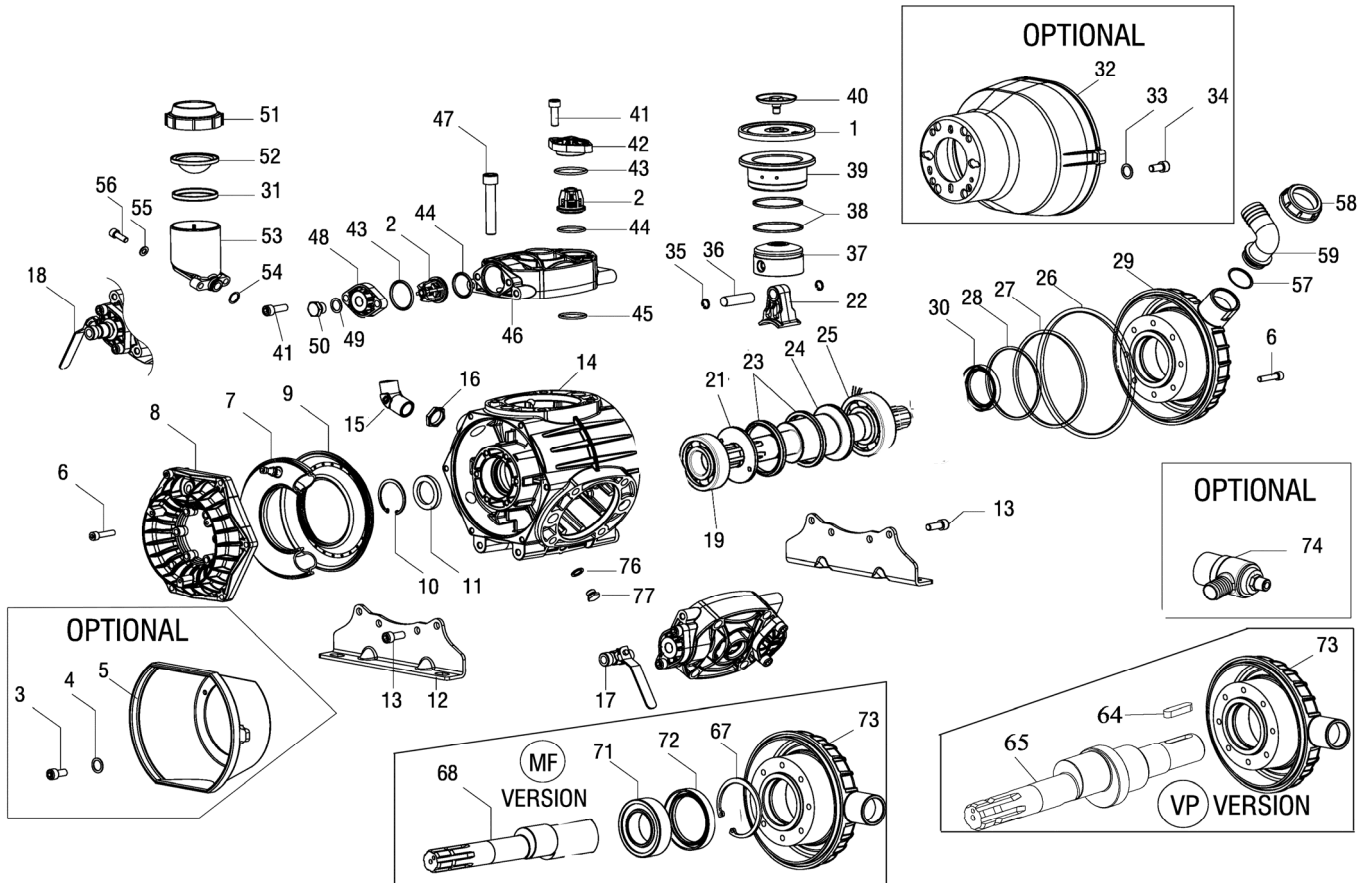
| PRESSIONE DI LAVORO - OPERATING PRESSURE | 2 ÷ 5 | 5+10  | 10 ÷ 20 | 20 ÷ 50 |
|--|-------|-------|---------|---------|
| ACCUMULATORE - ACCUMULATOR               | 2     | 2 ÷ 5 | 5 ÷ 7   | 6 ÷ 8   |

**KIT MEMBRANE - DIAPHRAGMS KIT**

| KIT                                     | 37.9817.97.3 | BUNA - N |   |    | 37.9818.97.3 | DESMOPAN |   |    | 37.9819.97.3 | VITON |   |    |    |    | 37.9820.97.3 | PENTAX |   |   |   |    |
|---|--------------|----------|---|----|--------------|----------|---|----|--------------|-------|---|----|----|----|--------------|--------|---|---|---|----|
| POSIZIONE ESPLOSO - POSITION NUMBER     |              | 1        | 7 | 45 |              | 1        | 7 | 45 |              | 1     | 7 | 26 | 27 | 43 | 44           | 59     |   | 1 | 7 | 45 |
| QUANTITA' NEL KIT - QUANTITIES INCLUDED | 3            | 3        | 1 | 6  | 3            | 3        | 1 | 6  | 3            | 3     | 1 | 1  | 1  | 6  | 6            | 6      | 3 | 3 | 1 | 6  |

**KIT POMPA/KIT VALVOLE - PUMP KIT/VALVES KIT**

| KIT                                     | 35.9882.97.3 | KIT POMPA VD-VP - PUMP KIT VD |    |    |    |    |    |    | 35.9883.97.3 | KIT POMPA VM - PUMP KIT VM |    |       |    |    |    |    | 35.9870.97.3 | KIT VALVOLE - VALVE KIT |   |   |    |    |
|---|--------------|-------------------------------|----|----|----|----|----|----|--------------|----------------------------|----|-------|----|----|----|----|--------------|-------------------------|---|---|----|----|
| POSIZIONE ESPLOSO - POSITION NUMBER     |              | 11                            | 30 | 45 | 26 | 27 | 28 | 43 | 44           |                            | 11 | 66-72 | 45 | 26 | 27 | 28 | 43           | 44                      |   | 2 | 43 | 44 |
| QUANTITA' NEL KIT - QUANTITIES INCLUDED | 1            | 1                             | 6  | 1  | 1  | 1  | 6  | 6  | 6            | 1                          | 1  | 6     | 1  | 1  | 1  | 6  | 6            | 6                       | 6 | 6 | 6  | 6  |



| POS. | CODICE PART NO. REF. | DENOMINAZIONE - DESCRIPTION - DESCRIPTION | Q.TY | POS. | CODICE PART NO. REF. | DENOMINAZIONE - DESCRIPTION - DESCRIPTION | Q.TY |
|------|----------------------|---|------|------|----------------------|---|------|
| 1    | 95.0040.31.2         | BUNA-N PISTON DIAPHRAGM                   | 3    | 33   | 84.3801.00.2         | WASHER DIA.10,5x18x2 (OPTIONAL)           | 4    |
| 1    | 95.0040.33.2         | VITON PISTON DIAPHRAGM (OPTIONAL)         | 3    | 34   | 86.3187.00.2         | SCREW M10x18 UNI 5931 (OPTIONAL)          | 4    |
| 1    | 95.0040.00.2         | DESMOPAN PISTON DIAPHRAGM (OPTIONAL)      | 3    | 35   | 80.0021.00.2         | RING DIA.15                               | 6    |
| 1    | 95.0040.36.2         | HPS PISTON DIAPHRAGM (OPTIONAL)           | 3    | 36   | 85.2007.00.2         | PISTON PIN DIA.15x24                      | 3    |
| 2    | 35.9802.97.3         | VALVES ASSEMBLY                           | 6    | 37   | 41.0025.09.2         | PISTON                                    | 3    |
| 3    | 86.1846.00.2         | SCREW M5,5x16 UNI 6954 (OPTIONAL)         | 3    | 38   | 81.8524.00.2         | PISTON RING                               | 6    |
| 4    | 84.3560.00.2         | WASHER DIA. 5,5x15x1,6 (OPTIONAL)         | 3    | 39   | 41.0026.01.2         | PISTON SLEEVE                             | 3    |
| 5    | 31.1466.32.2         | PLAIN SAFETY CONE (OPTIONAL)              | 1    | 40   | 41.9835.97.3         | KIT DISK + SCREW INOX                     | 3    |
| 6    | 86.2752.00.2         | SCREW M8x35 UNI 5931                      | 18   | 41   | 86.3300.00.2         | SCREW M10x30 UNI 5931                     | 12   |
| 7    | 41.0120.97.3         | NBR BALLASTER DIAPHRAGM                   | 1    | 42   | 41.0109.09.2         | VALVE COVER                               | 3    |
| 7    | 41.0121.97.3         | VITON BALLASTER DIAPHRAGM (OPTIONAL)      | 1    | 43   | 80.3262.00.2         | O-RING DIA.3,53x41,28                     | 6    |
| 7    | 41.0122.97.3         | EPDM BALLASTER DIAPHRAGM (OPTIONAL)       | 1    | 43   | 80.3262.50.2         | O-RING DIA.3,53x41,28 (KIT VITON)         | 6    |
| 7    | 41.0123.97.3         | HPS BALLASTER DIAPHRAGM (OPTIONAL)        | 1    | 44   | 80.3251.00.2         | O-RING DIA.3,53x32,93                     | 6    |
| 8    | 37.0108.09.2         | BALLASTER COVER                           | 1    | 44   | 80.3251.50.2         | O-RING DIA.3,53x32,93 (KIT VITON)         | 6    |
| 9    | 41.0104.09.2         | LOWER BALLASTER                           | 1    | 45   | 80.3200.00.2         | O-RING DIA.2,62x22,22                     | 6    |
| 10   | 80.1369.00.2         | RING DIA.52                               | 1    | 45   | 80.3200.50.2         | O-RING DIA.2,62x22,22 (KIT VITON)         | 6    |
| 11   | 80.2143.10.2         | OIL SEAL DIA.35x52x7 (VD-MF-VP)           | 1    | 46   | 41.0111.09.2         | PUMP HEAD                                 | 3    |
| 12   | 37.0114.61.2         | MOUNTING RAIL                             | 2    | 47   | 86.4250.00.2         | SCREW M14x70 UNI 5931                     | 12   |
| 13   | 86.3265.00.2         | SCREW M10x25 UNI 5931                     | 8    | 48   | 41.0110.09.2         | VALVE COVER G.3/8"                        | 3    |
| 14   | 37.0112.09.2         | CRANKCASE                                 | 1    | 49   | 82.4107.00.2         | GASKET                                    | 1    |
| 15   | 81.4909.00.2         | BRASS G.3/4 NUT                           | 1    | 50   | 85.2579.00.2         | CAP G.3/8"                                | 1    |
| 16   | 83.5063.28.2         | 60° ELBOW CONNECTOR G.3/4                 | 1    | 51   | 28.0144.32.2         | OIL FILLER COVER                          | 1    |
| 17   | 84.5544.10.2         | LEFT TAP G.3/8-G.1/2                      | 1    | 52   | 41.0017.31.2         | OIL FILLER DIAPHRAGM                      | 1    |
| 18   | 84.5544.00.2         | RIGHT TAP G.3/8-G.1/2                     | 1    | 53   | 55.0004.32.2         | OIL FILLER                                | 1    |
| 19   | 81.2867.00.2         | BEARING DIA.35X80X21                      | 1    | 54   | 80.3180.00.2         | O-RING DIA. 2,62x15,08                    | 1    |
| 21   | 41.0023.61.2         | SHAFT RING                                | 1    | 55   | 84.3685.50.2         | WASHER DIA.8,2X15X1,5 UNI 1750            | 2    |
| 22   | 41.0009.09.2         | CONROD                                    | 3    | 56   | 86.2683.00.2         | BOLT M8x25 UNI 5931                       | 2    |
| 22   | 41.0047.11.2         | BRONZE CONROD (OPTIONAL)                  | 3    | 57   | 80.3219.10.2         | O-RING DIA. 3X30                          | 1    |
| 23   | 14.0015.76.2         | ANELLO BIELLA                             | 2    | 58   | 82.0070.00.2         | WING NUT G.1"1/2                          | 1    |
| 24   | 41.0033.26.2         | "VD" CRANKSHAFT (1"3/8" M-M)              | 1    | 59   | 84.0570.00.2         | 90° ELBOW CONNECTOR DIA.35-1,37"          | 1    |
| 25   | 81.2913.00.2         | BALL BEARING DIA. 40X90X23                | 1    | 64   | 80.6580.00.2         | KEY 10X8X50 UNI 6604                      | 1    |
| 26   | 80.3295.00.2         | O-RING DIA. 3,53x190,1                    | 1    | 65   | 41.0138.26.2         | "VP" CRANKSHAFT (SOLID SHAFT DIA.35)      | 1    |
| 26   | 80.3295.50.2         | O-RING DIA.3,53x190,1 (KIT VITON)         | 1    | 67   | 80.1428.00.2         | SNAP RING DIA.80 UNI 7437                 | 1    |
| 27   | 80.3210.70.2         | O-RING DIA. 2,62x126,67                   | 1    | 68   | 41.0082.26.2         | "MF" CRANKSHAFT (1"3/8 M-F)               | 1    |
| 27   | 80.3210.75.2         | O-RING DIA. 2,62x126,67 (KIT VITON)       | 1    | 71   | 81.2970.00.2         | ROLLER BEARING                            | 1    |
| 28   | 80.3291.00.2         | O-RING DIA. 3,53x88,5                     | 1    | 72   | 80.2235.00.2         | OIL SEAL DIA.50X80X10                     | 1    |
| 29   | 41.0112.09.2         | INLET COVER "VD"                          | 1    | 73   | 41.0116.09.2         | INLET COVER "VP-MF"                       | 1    |
| 30   | 80.2190.00.2         | OIL SEAL DIA.40x72x10                     | 1    | 74   | 24.3050.97.3         | SAFETY VALVE 50 BAR (OPTIONAL)            | 1    |
| 31   | 14.0116.32.2         | DIAPHRAGM SPACER                          | 1    | 76   | 82.4079.00.2         | WASHER DIA.13                             | 1    |
| 32   | 31.1482.32.2         | PLAIN SAFETY CONE L.180 (OPTIONAL)        | 1    | 77   | 85.2543.50.2         | CAP G.1/4"                                | 1    |
| 32   | 31.1468.32.2         | PLAIN SAFETY CONE L.135 (OPTIONAL)        | 1    |      |                      |   |      |